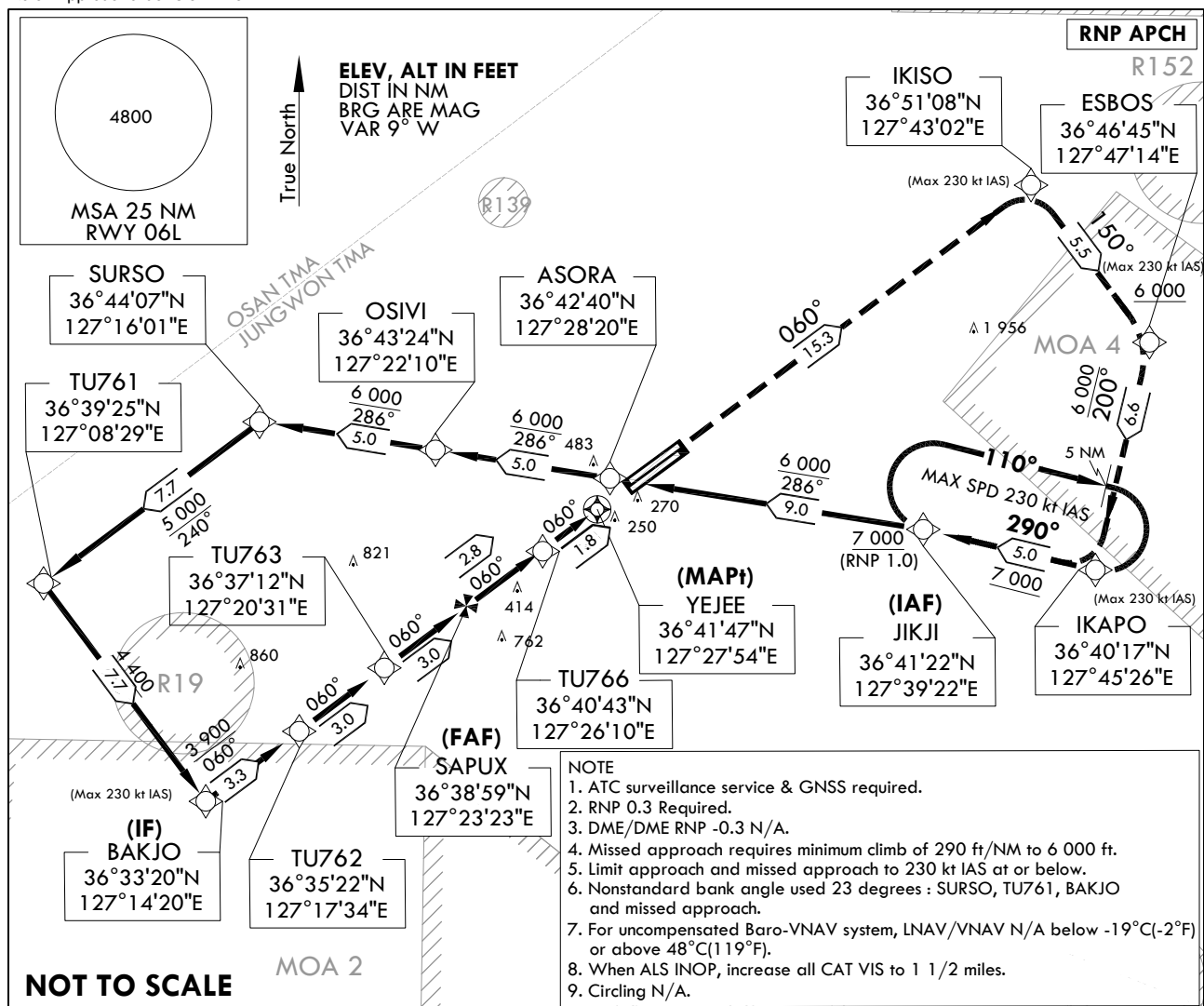


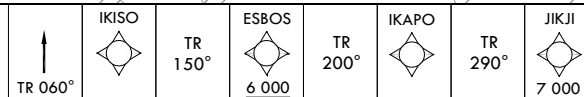
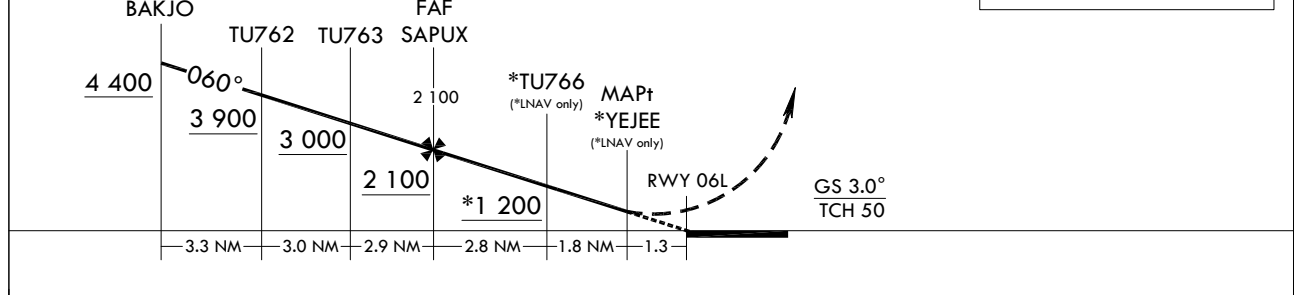
INSTRUMENT  
APPROACH  
CHARTAERODROME ELEV 192 ft  
HEIGHTS RELATED TO  
THR RWY 06L - ELEV 167 ftJUNGWON APP 134.0 265.75  
CHEONGJU GCA 134.4 134.1  
CHEONGJU TWR 118.7 126.2 249.6CHEONGJU/Cheongju INTL(RKTU)  
RNP RWY 06L

Note : Approach under U.S TERPS.



## MISSED APPROACH

Climb to 7 000 ft via on track 060° to IKISO, then track 150° to cross ESBOS at or above 6 000 ft, then track 200° to IKAPO, then track 290° to JIKJI and hold.

TRANSITION ALT 14 000  
TRANSITION LVL FL 140

CATEGORY		A	B	C	D	E
LNAV/VNAV DA	ALS	625-1 $\frac{1}{4}$ 458(500-1 $\frac{1}{4}$ )				N/A
	ALS INOP	625-1 $\frac{1}{2}$ 458(500-1 $\frac{1}{2}$ )				N/A
LNAV MDA	ALS	620-1 $\frac{1}{4}$ 453(500-1 $\frac{1}{4}$ )				N/A
	ALS INOP	620-1 $\frac{1}{2}$ 453(500-1 $\frac{1}{2}$ )				N/A
CIRCLING		N/A				

Change : Amended chart symbol.

CHEONGJU/Cheongju INTL(RKTU)  
RNP RWY 06L

## AERONAUTICAL DATA TABULATION

## Instrument Approach Procedure Coding Tables

RNP RWY 06L

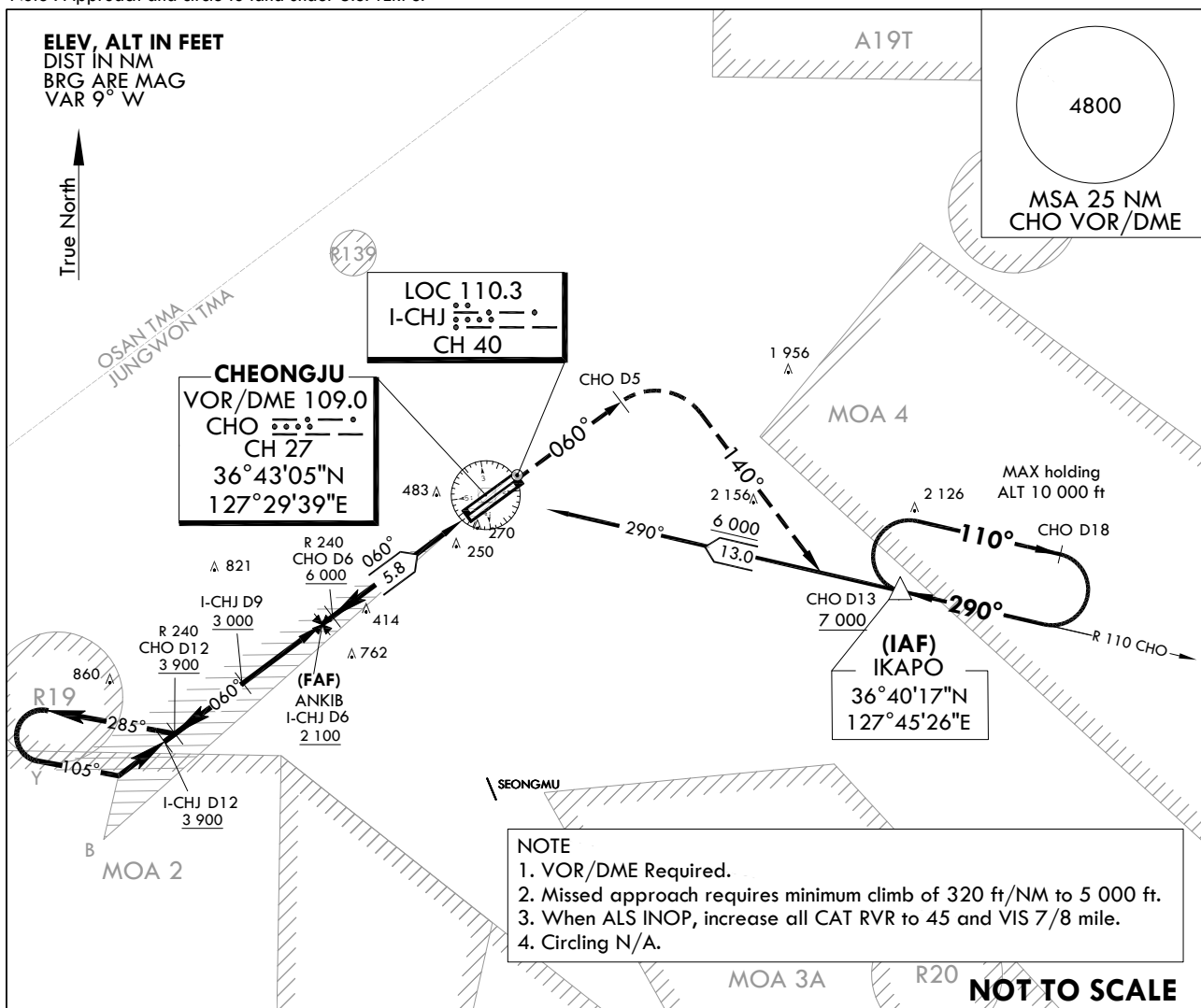
Serial Number	Path Descriptor	Waypoint Identifier	Fly-over	Course/Track °M(°T)	Distance (NM)	Turn direction	Altitude (ft)	Speed (kt)	Coordinates	VPA/TCH	Navigation specification	Remarks
001	-	JKJI	-	-	-	-	+7 000	-	36°41'21.7"N 127°39'22.1"E	-	RNAV 1	IAF
002	TF	ASORA	-	286 (278.5)	9.0	-	+6 000	-	36°42'40.4"N 127°28'19.6"E	-	RNAV 1	-
003	TF	OSVI	-	286 (278.3)	5.0	-	+6 000	-	36°43'23.8"N 127°22'10.3"E	-	RNAV 1	-
004	TF	SURSO	-	286 (278.3)	5.0	-	+6 000	-	36°44'06.8"N 127°16'01.0"E	-	RNAV 1	-
005	TF	TU761	-	240 (232.3)	7.7	-	+5 000	-	36°39'25.0"N 127°08'29.0"E	-	RNAV 1	-
006	TF	BAKJO	-	150 (142.2)	7.7	-	+4 400	-230	36°33'20.1"N 127°14'19.5"E	-	RNAV 1	IF
007	TF	TU762	-	060 (052.1)	3.3	-	+3 900	-	36°35'21.9"N 127°17'33.6"E	-	RNAV 1	-
008	TF	TU763	-	060 (052.3)	3.0	-	+3 000	-	36°37'12.1"N 127°20'30.5"E	-	RNAV 1	-
009	TF	SAPUX	-	060 (052.3)	2.9	-	+2 100	-	36°38'59.3"N 127°23'22.9"E	-	RNP 0.3	FAF
010	TF	TU766	-	060 (052.4)	2.8	-	+1 200	-	36°40'42.9"N 127°26'09.9"E	-	RNP 0.3	(LNAV only)
011	TF	YEJEE	Y	060 (052.4)	1.8	-	+620	-	36°41'47.4"N 127°27'53.8"E	-	RNP 0.3	MAP(LNAV only)
012	TF	IKISO	-	060 (052.4)	15.3	-	+6 000	-230	36°51'08.3"N 127°43'01.8"E	-	RNAV 1	CG 290 ft/NM to 6 000 ft
013	TF	ESBOS	-	150 (142.4)	5.5	-	+6 000	-230	36°46'44.7"N 127°47'14.2"E	-	RNAV 1	-
014	TF	IKAPO	-	200 (192.6)	6.6	-	@7 000	-230	36°40'16.6"N 127°45'26.2"E	-	RNAV 1	-
015	TF	JKJI	-	290 (282.5)	5.0	-	@7 000	-230	36°41'21.7"N 127°39'22.1"E	-	RNAV 1	-
016	HM	JKJI	-	290 (282.5)	5.0	R	-	-	36°41'21.7"N 127°39'22.1"E	-	-	-


**AERODROME ELEV 192** ft  
HEIGHTS RELATED TO  
THR RWY 06L - ELEV **167** ft

JUNGWON APP	134.0	265.75
CHEONGJU GCA	134.4	134.1
CHEONGJU TWR	118.7	126.2 249.6

**CHEONGJU/Cheongju Intl(RKTU)**  
**ILS Y**  
**RWY 06L**

Note : Approach and circle to land under U.S. TERPS.

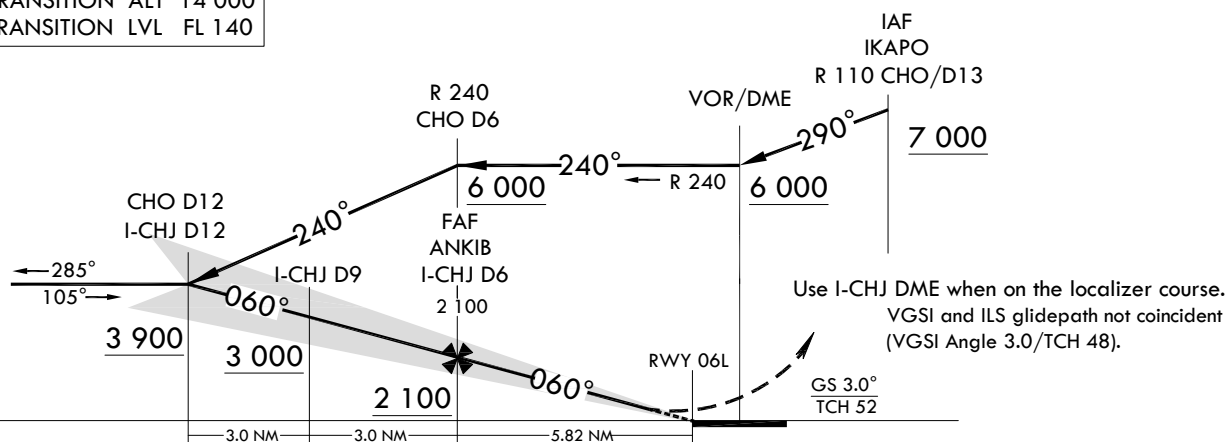


CHO D5 ↑ HDG 060° 5 000	 HDG 140°	R 110 CHO	R 110 CHO D13 <u>7 000</u>
----------------------------------	---	--------------	-------------------------------------

### MISSED APPROACH

Climb to 5 000 ft via HDG 060° to CHO 5 DME then right turn HDG 140° to intercept R 110 CHO and R 110 CHO to IKAPO and continue climb to 7 000 ft and hold.

TRANSITION	ALT	14 000
TRANSITION	LVL	FL 140



CATEGORY		A	B	C	D	E
S-ILS 06L	ALS	367/40 200(200- $\frac{3}{4}$ )				N/A
	ALS INOP	367/45 200(200- $\frac{7}{8}$ )				N/A

Change : Amended chart symbol(LOC, IAF).

CHEONGJU/Cheongju Intl(RKTU)  
ILS Y  
RWY 06L

# AERONAUTICAL DATA TABULATION

ILS Approach to RWY 06L			
Fix/Point		Coordinates	
IKAPO	R 110 CHO/13.00 NM CHO	36°40'16.6"N	127°45'26.2"E
CHO VOR/DME	-	36°43'04.9"N	127°29'38.7"E
D6 CHO	R 240 CHO/6.00 NM CHO	-	
D12 ICHJ	BRG 60.11°/12.00 NM ICHJ	36°35'21.9"N	127°17'33.6"E
D9 ICHJ	BRG 60.11°/9.00 NM ICHJ	36°37'12.1"N	127°20'30.5"E
ANKIB	-	36°39'02.7"N	127°23'28.6"E
RWY 06L THR	-	36°42'36.12"N	127°29'12.42"E
D5 CHO	BRG 60.11°/5.00 NM CHO	36°46'00.1"N	127°34'42.0"E
R 110 CHO	-	-	
IKAPO	R 110 CHO/13.00 NM CHO	36°40'16.6"N	127°45'26.2"E

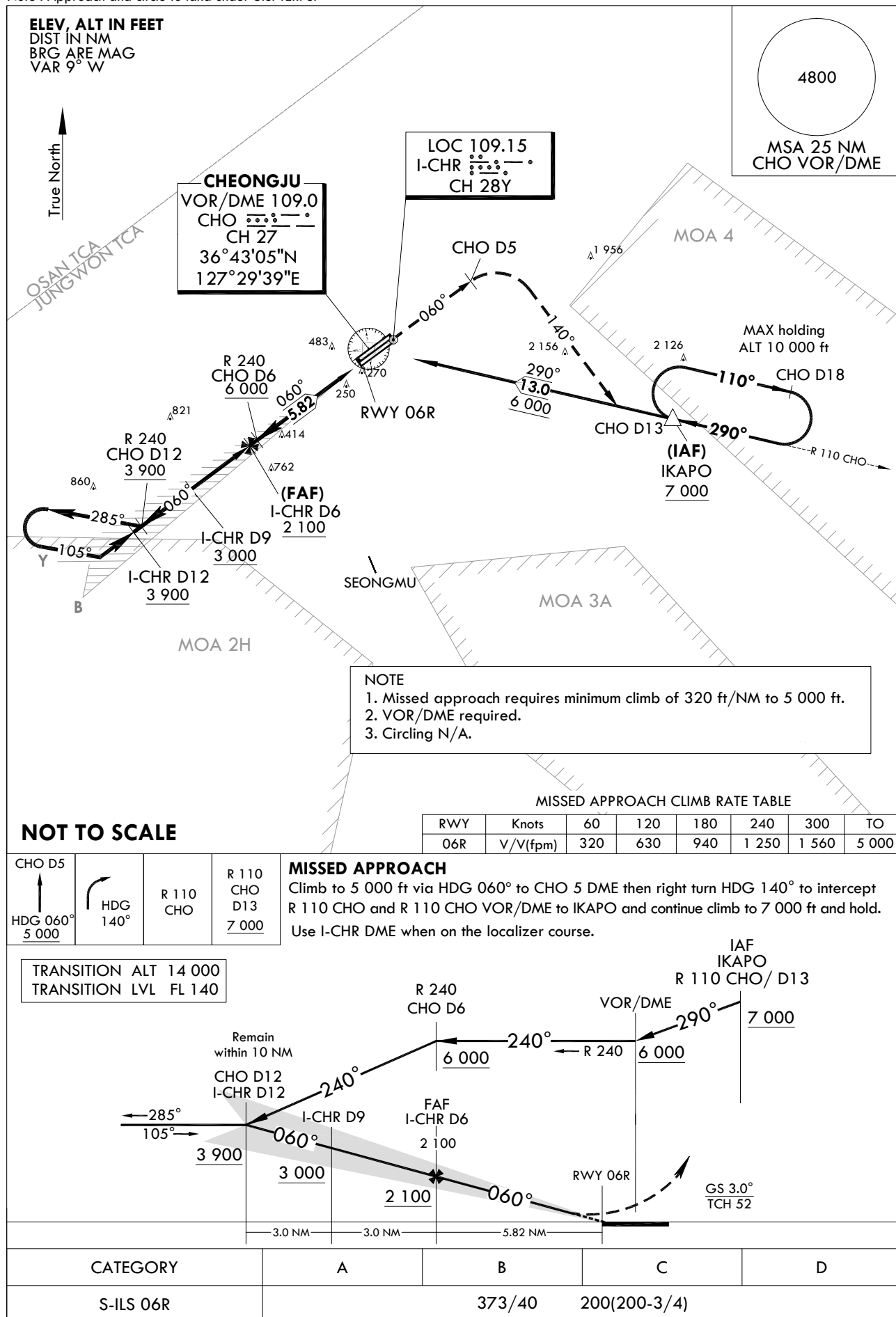
**INSTRUMENT  
APPROACH  
CHART**

**AERODROME ELEV 192 ft**  
HEIGHTS RELATED TO  
THR RWY 06R - ELEV 171 ft

JUNGWON APP 134.0 265.75  
CHEONGJU GCA 134.4 134.1  
CHEONGJU TWR 118.7 126.2 249.6

**CHEONGJU/Cheongju INTL(RKTU)**  
**ILS Y**  
**RWY 06R**

Note : Approach and circle to land under U.S. TERPS.



Change : Amended chart symbol(LOC, IAF).

**INTENTIONALLY**

**LEFT**

**BLANK**

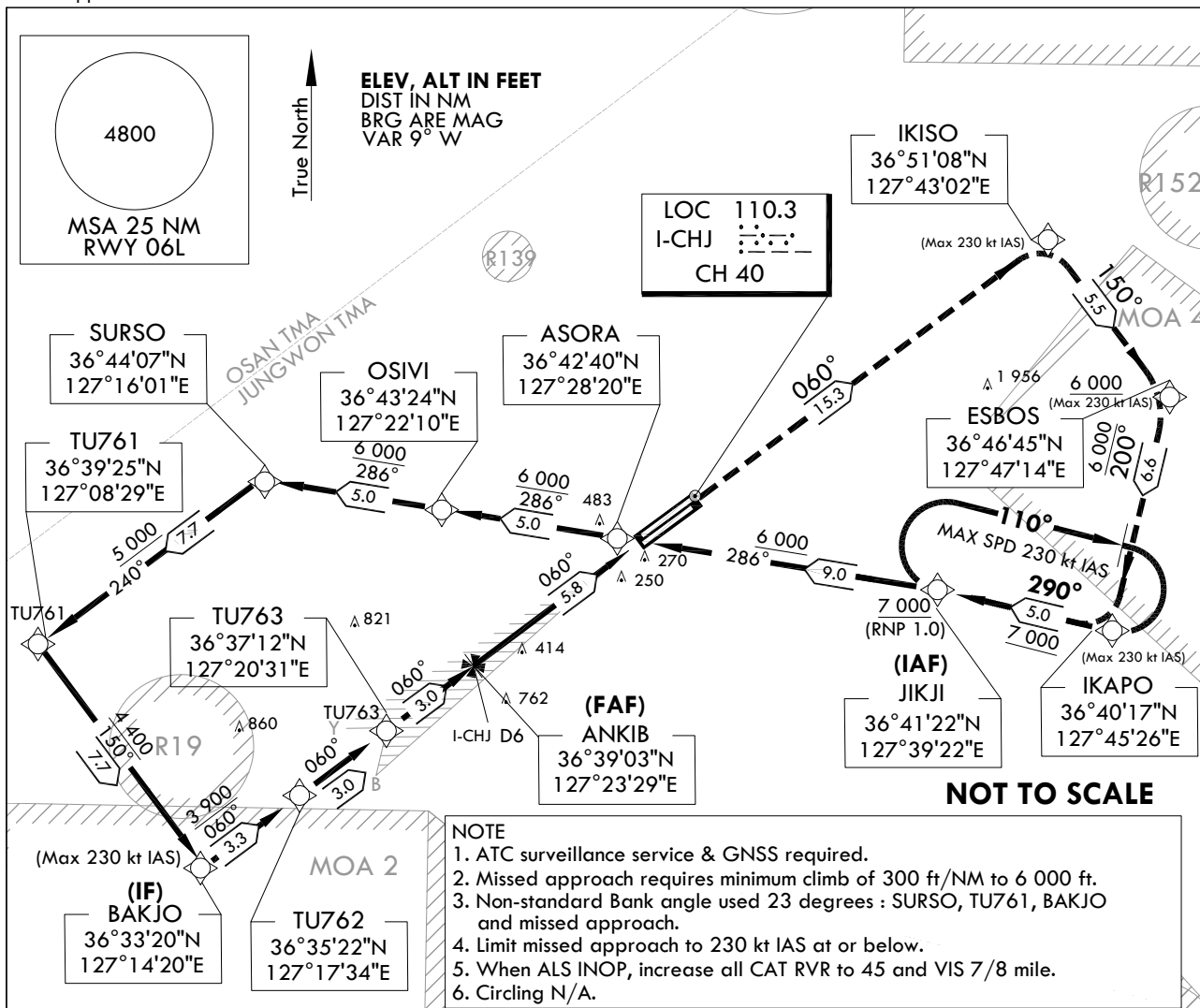
**INSTRUMENT  
APPROACH  
CHART**

**AERODROME ELEV 192 ft**  
HEIGHTS RELATED TO  
THR RWY 06L - ELEV **167 ft**

JUNGWON APP 134.0 265.75  
CHEONGJU GCA 134.4 134.1  
CHEONGJU TWR 118.7 126.2 249.6

**CHEONGJU/Cheongju Intl(RKTU)**  
**ILS Z**  
**RWY 06L**

Note : Approach and circle to land under U.S. TERPS.

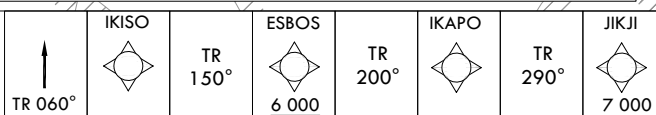


**MISSED APPROACH**

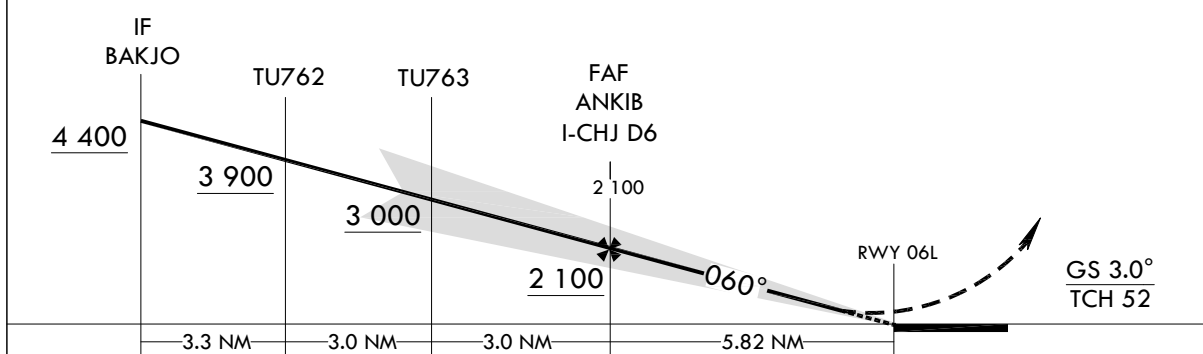
Climb to 6 000 ft via on track 060° to IKISO, then track 150° to cross ESBOS at or above 6 000 ft, then track 200° to IKAPO, then track 290° to cross JIKJI at or above 7 000 ft and hold.

Use I-CHJ DME when on the localizer course.

VGSI and ILS glidepath not coincident (VGSI Angle 3.0/TCH 48).



TRANSITION ALT 14 000  
TRANSITION LVL FL 140



CATEGORY		A	B	C	D	E
S-ILS 06L	ALS		367/40	200(200- $\frac{3}{4}$ )		N/A
	ALS INOP		367/45	200(200- $\frac{7}{8}$ )		N/A

Change : Amended chart symbol(LOC).

CHEONGJU/Cheongju Intl(RKTU)  
ILS Z  
RWY 06L

# AERONAUTICAL DATA TABULATION

ILS Approach to RWY 06L			
Fix/Point		Coordinates	
JIKJI (IAF)	-	36°41'21.7"N	127°39'22.1"E
ASORA	-	36°42'40.4"N	127°28'19.6"E
OSIVI	-	36°43'23.8"N	127°22'10.3"E
SURSO	R 283 CHO/11.00 NM CHO	36°44'06.8"N	127°16'01.0"E
TU761	-	36°39'25.0"N	127°08'29.0"E
BAKJO	-	36°33'20.1"N	127°14'19.6"E
TU762	-	36°35'21.9"N	127°17'33.6"E
TU763	-	36°37'12.1"N	127°20'30.5"E
ANKIB	-	36°39'02.7"N	127°23'28.6"E
RWY 06L THR	-	36°42'36.12"N	127°29'12.42"E
IKISO	-	36°51'08.3"N	127°43'01.8"E
ESBOS	-	36°46'44.7"N	127°47'14.2"E
IKAPO	R 110 CHO/13.00 NM CHO	36°40'16.6"N	127°45'26.2"E
JIKJI	-	36°41'21.7"N	127°39'22.1"E

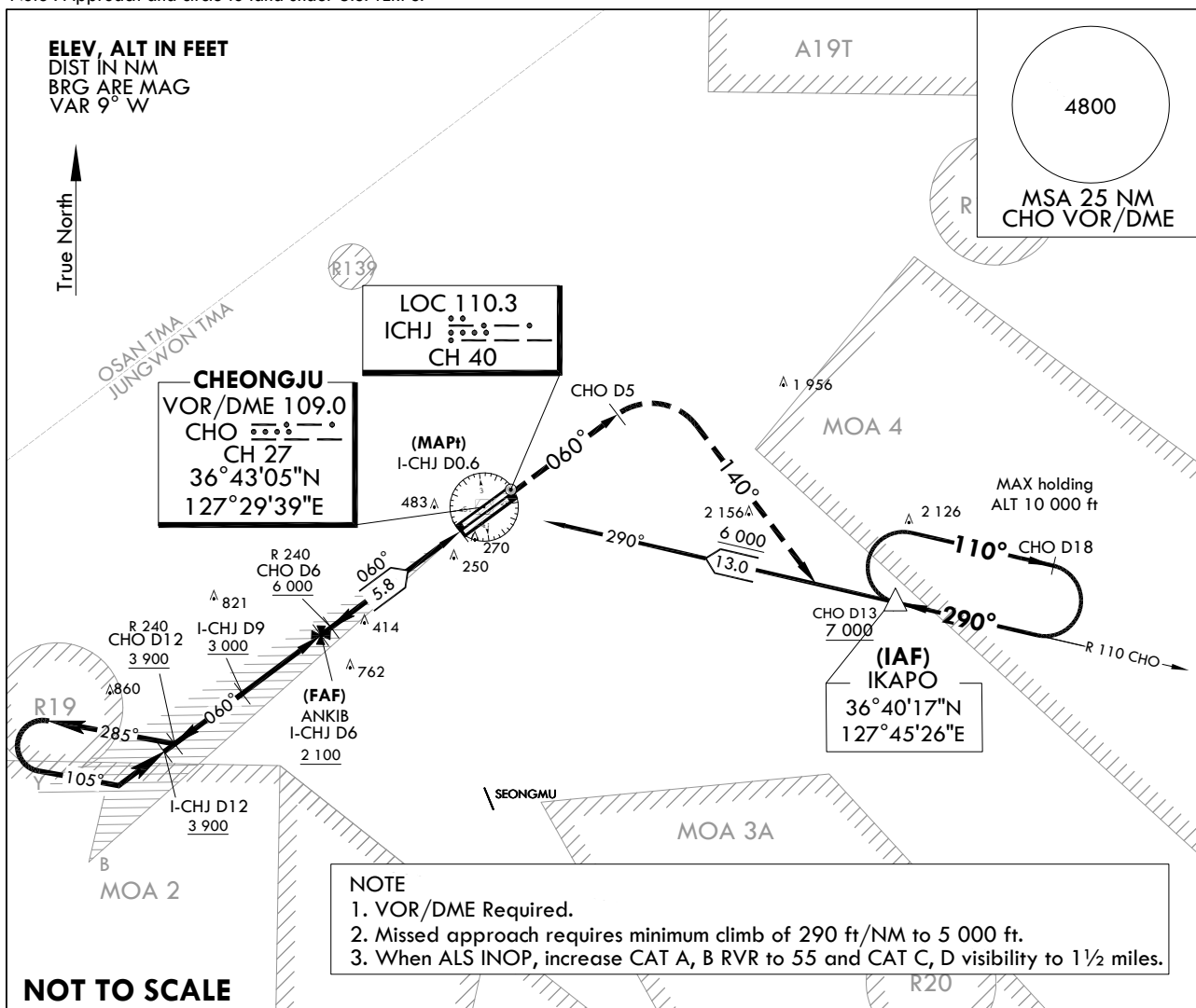



**AERODROME ELEV 192 ft**  
HEIGHTS RELATED TO  
THR RWY 06L - ELEV **167 ft**

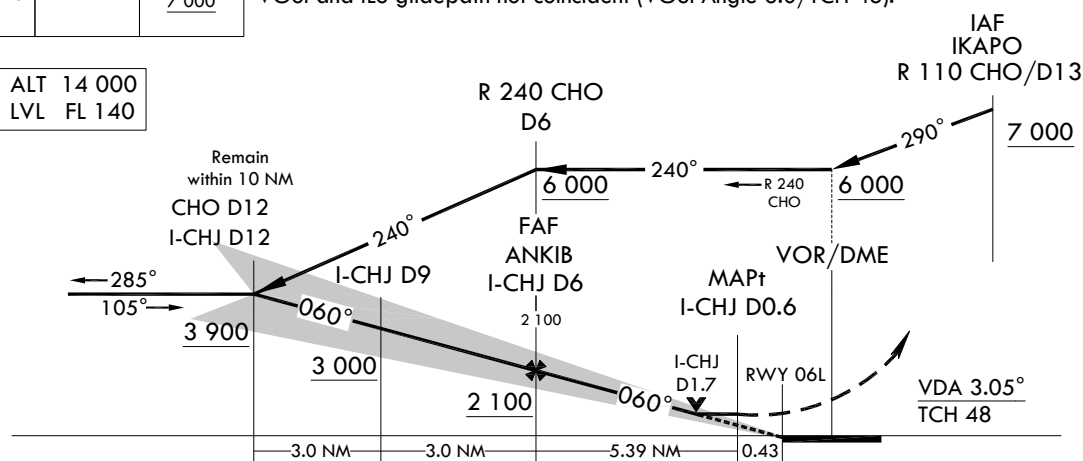
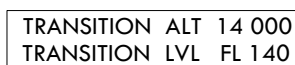
JUNGWON APP	134.0	265.75
CHEONGJU GCA	134.4	134.1
CHEONGJU TWR	118.7	126.2 249.6

**CHEONGJU/Cheongju Intl(RKTU)**  
**LOC Y**  
**RWY 06L**

Note : Approach and circle to land under U.S. TERPS.



CHO D5 ↑ HDG 060° 5 000	 HDG 140°	R 110 CHO	R 110 CHO D13 <u>7 000</u>	<b>MISSED APPROACH</b> Climb to 5 000 ft via HDG 060° to CHO 5 DME then right turn HDG 140° to intercept R 110 CHO and R 110 CHO to IKAPO and continue climb to 7 000 ft and hold. VGSi and ILS glidepath not coincident (VGSi Angle 3.0/TCH 48).	IAF
----------------------------------	---	--------------	-------------------------------------	---	-----



CATEGORY		A	B	C	D	E
S-LOC 06L	ALS	700/40 533(600- $\frac{3}{4}$ )		700-1 $\frac{1}{4}$ 533(600-1 $\frac{1}{4}$ )		N/A
	ALS INOP	700/55 533(600-1)		700-1 $\frac{1}{2}$ 533(600-1 $\frac{1}{2}$ )		N/A
CIRCLING		880-1 688(700-1)		1 200-3 1 008(1 100-3)	2 000-3 1 808(1 900-3)	N/A

Change : Amended chart symbol(LOC, IAF).

CHEONGJU/Cheongju Intl(RKTU)

LOC Y

RWY 06L

## AERONAUTICAL DATA TABULATION

LOC Approach to RWY 06L from LOC/DME			
Fix/Point		Coordinates	
IKAPO	R 110 CHO/13.00 NM CHO	36°40'16.6"N	127°45'26.2"E
CHO VOR/DME	-	36°43'04.9"N	127°29'38.7"E
D6 CHO	R 240 CHO/6.00 NM CHO	-	
D12 ICHJ	BRG 60.11°/12.00 NM ICHJ	36°35'21.9"N	127°17'33.6"E
D9 ICHJ	BRG 60.11°/9.00 NM ICHJ	36°37'12.1"N	127°20'30.5"E
ANKIB	-	36°39'02.7"N	127°23'28.6"E
D0.6 ICHJ	0.6 NM ICHJ	-	
D5 CHO	BRG 60.11°/5.00 NM CHO	36°46'00.1"N	127°34'42.0"E
R 110 CHO	-	-	
IKAPO	R 110 CHO/13.00 NM CHO	36°40'16.6"N	127°45'26.2"E

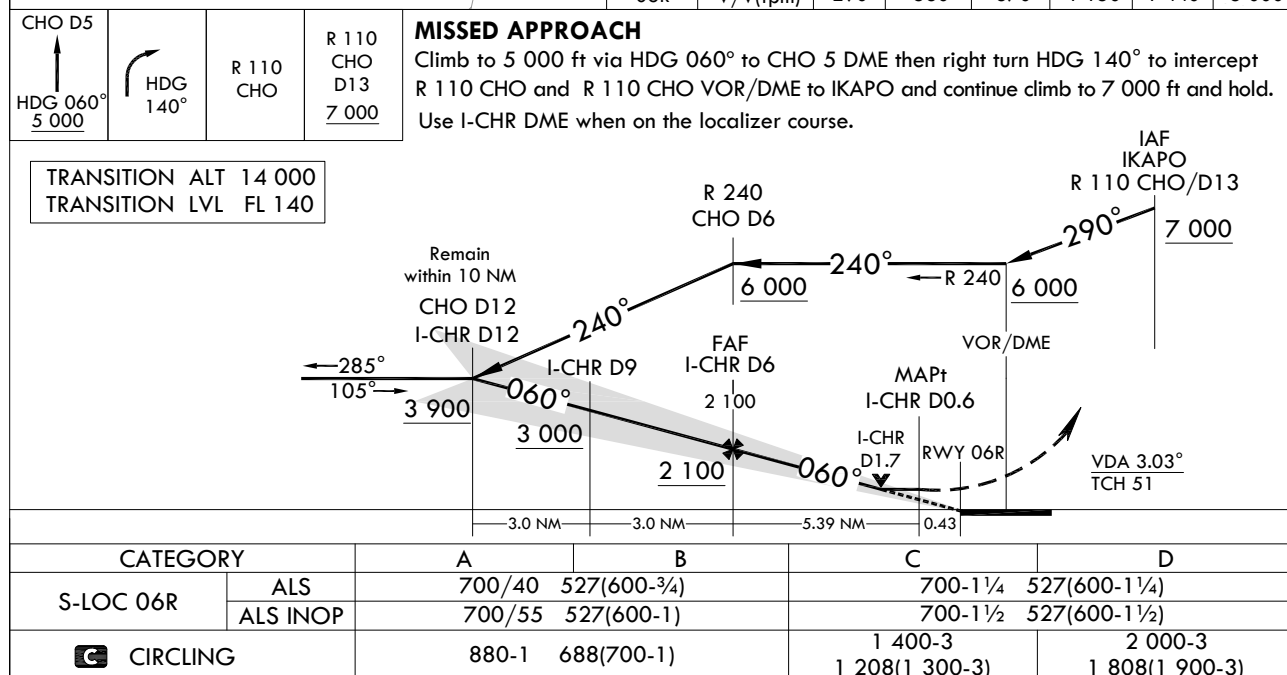
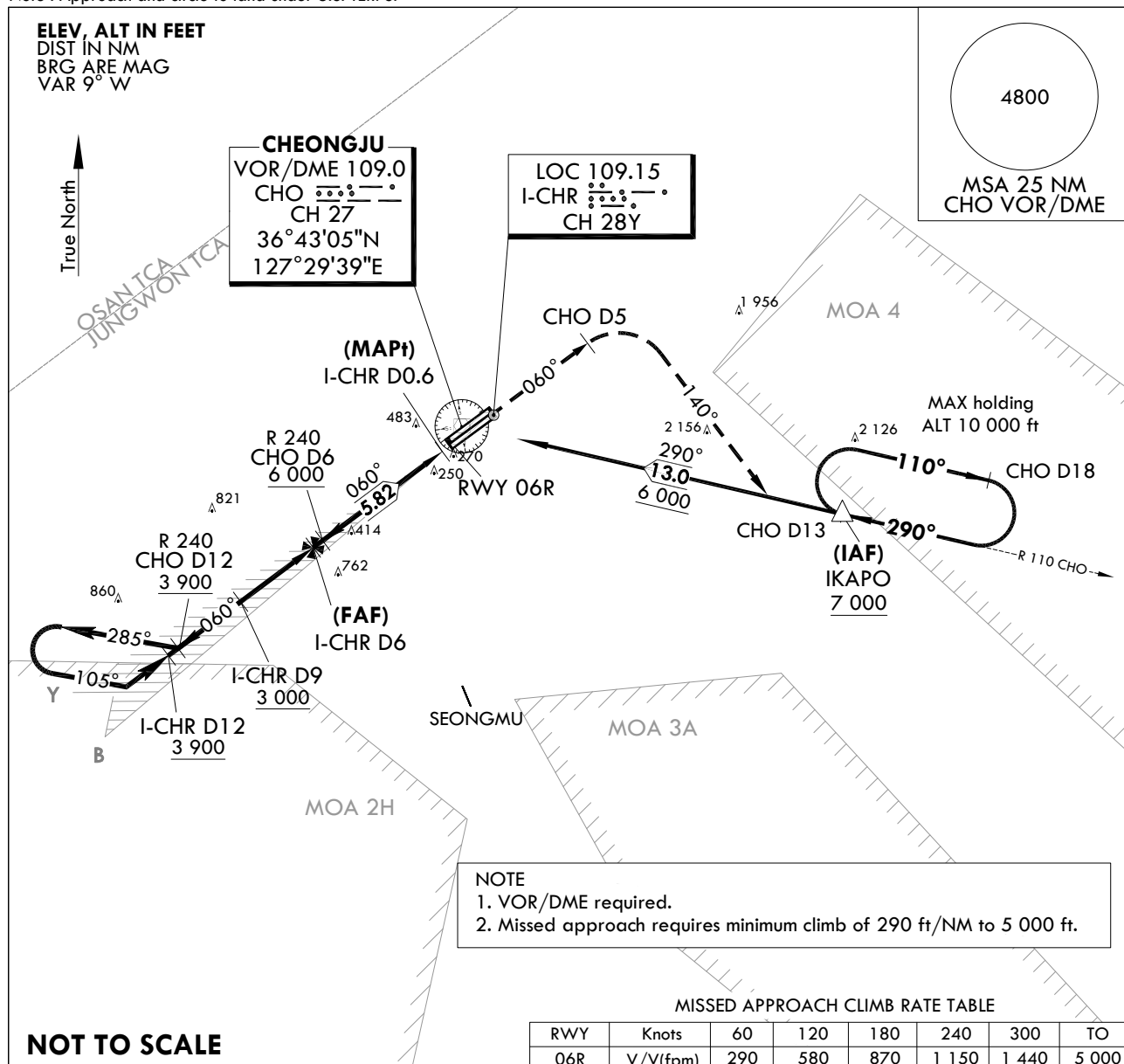
**INSTRUMENT  
APPROACH  
CHART**

**AERODROME ELEV 192 ft**  
HEIGHTS RELATED TO  
THR RWY 06R - ELEV 171 ft

JUNGWON APP 134.0 265.75  
CHEONGJU GCA 134.4 134.1  
CHEONGJU TWR 118.7 126.2 249.6

**CHEONGJU/Cheongju INTL(RKTU)  
LOC  
RWY 06R**

Note : Approach and circle to land under U.S. TERPS.



Change : Amended chart symbol(LOC, IAF).

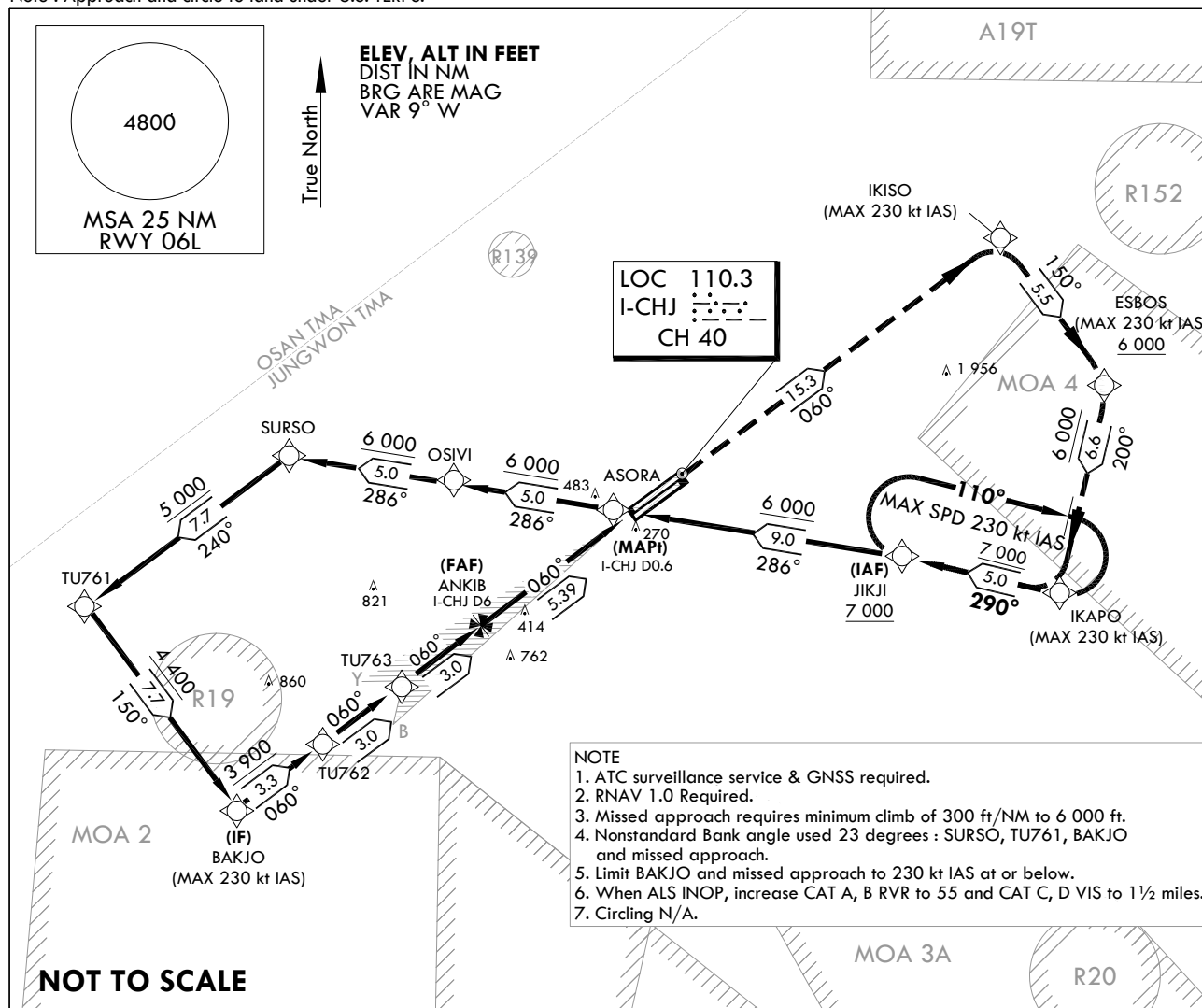
**INTENTIONALLY**

**LEFT**

**BLANK**

INSTRUMENT  
APPROACH  
CHARTAERODROME ELEV 192 ft  
HEIGHTS RELATED TO  
THR RWY 06L - ELEV 187 ftJUNGWON APP 134.0 265.75  
CHEONGJU GCA 134.4 134.1  
CHEONGJU TWR 118.7 126.2 249.6CHEONGJU/Cheongju INTL(RKTU)  
LOC Z  
RWY 06L

Note : Approach and circle to land under U.S. TERPS.

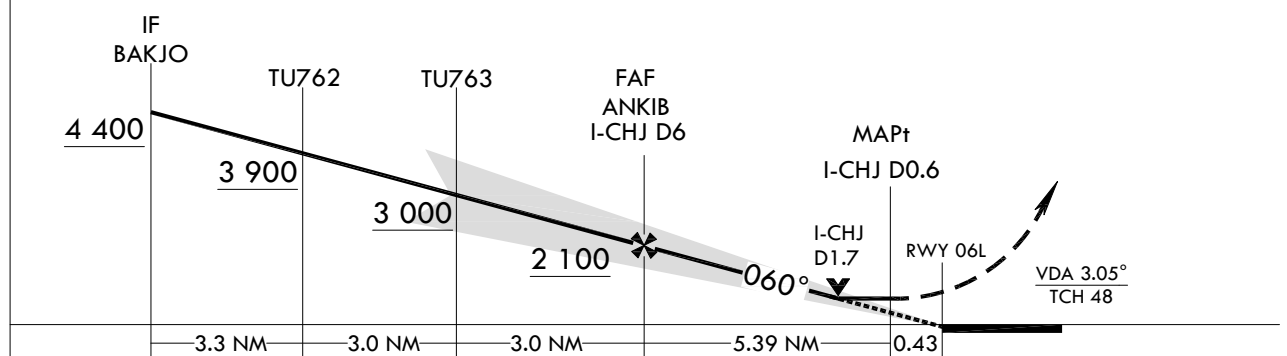
**MISSED APPROACH**

Climb to 6 000 ft via on track 060° to IKISO, then track 150° to cross ESBOS at or above 6 000 ft, then track 200° to IKAPO, then track 290° to cross JIKJI at or above 7 000 ft and hold.

Use I-CHJ DME when on the localizer course.

↑ TR 060°	IKISO	TR 150°	ESBOS	TR 200°	IKAPO	TR 290°	JIKJI
			6 000				7 000

TRANSITION ALT 14 000  
TRANSITION LVL FL 140



CATEGORY		A	B	C	D	E
S-LOC 06L	ALS	700/40	533(600-¾)	700-1¼	533(600-1¼)	N/A
	ALS INOP	700/55	533(600-1)	700-1½	533(600-1½)	N/A

Change : Amended chart symbol(LOC).

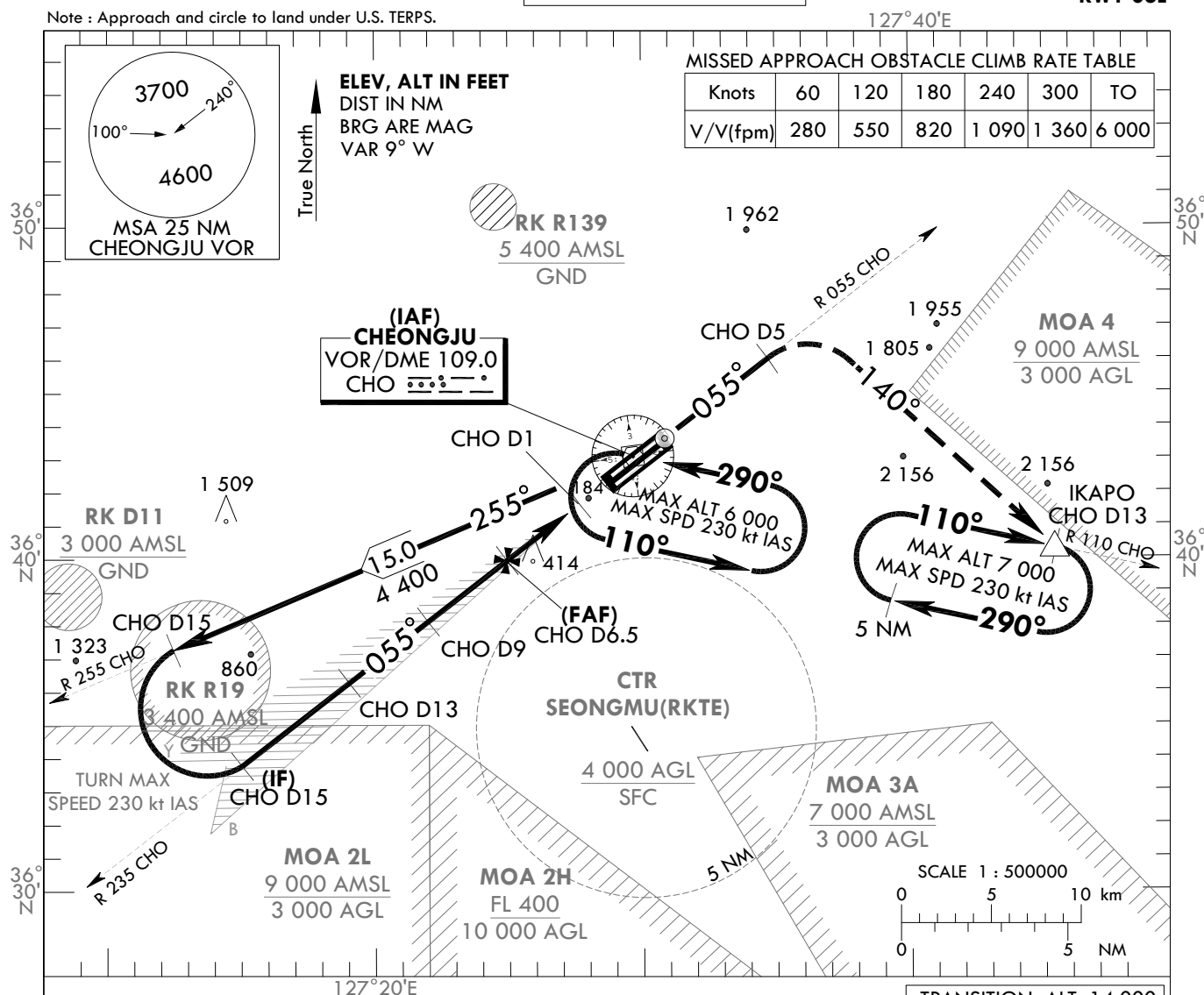
**INTENTIONALLY**

**LEFT**

**BLANK**

INSTRUMENT  
APPROACH  
CHARTAERODROME ELEV 192 ft  
HEIGHTS RELATED TO  
THR RWY 06L - ELEV 168 ftJUNGWON APP 134.0 265.75  
CHEONGJU GCA 134.4 134.1  
CHEONGJU TWR 118.7 126.2 249.6CHEONGJU/Cheongju Intl(RKTU)  
VOR  
RWY 06L

Note : Approach and circle to land under U.S. TERPS.



**INTENTIONALLY**

**LEFT**

**BLANK**

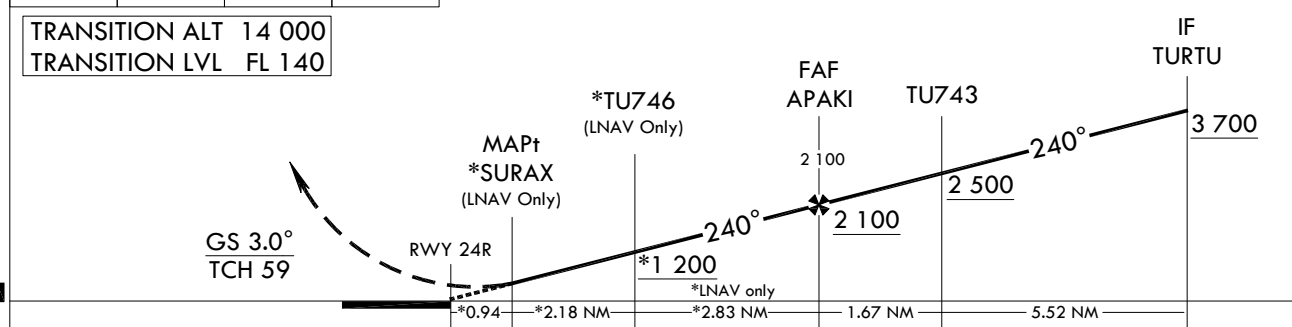
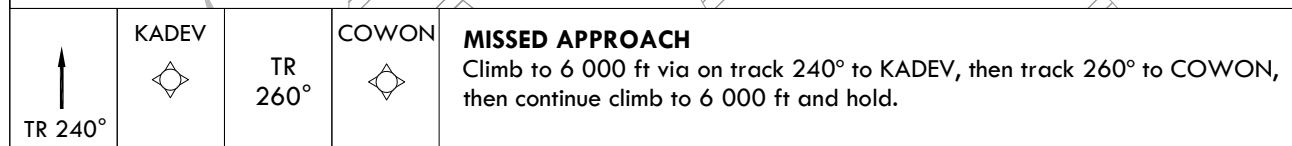
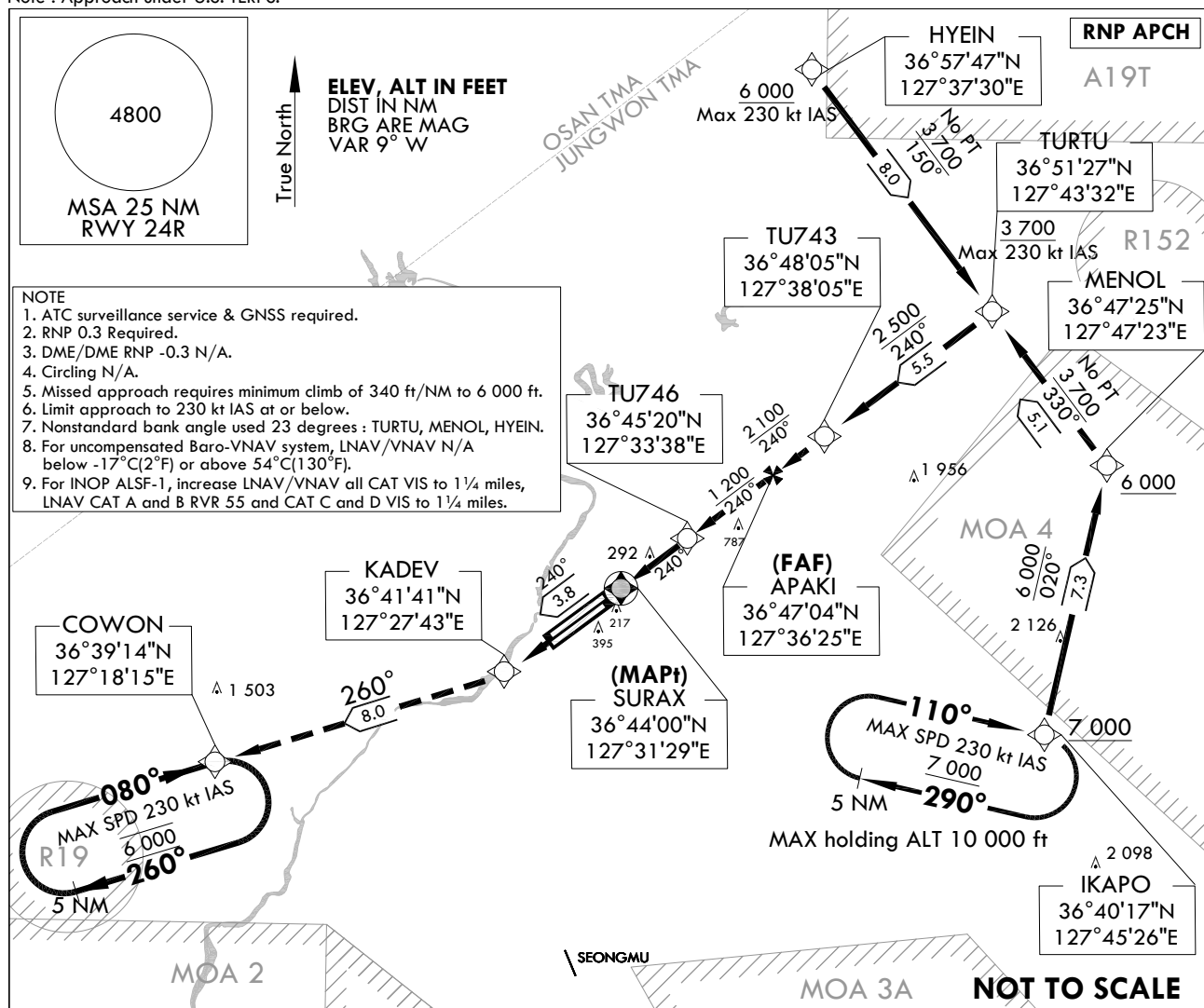


**AERODROME ELEV 192 ft**  
HEIGHTS RELATED TO  
THR RWY 24R - ELEV **187 ft**

JUNGWON APP	134.0	265.75
CHEONGJU GCA	134.4	134.1
CHEONGJU TWR	118.7	126.2 249.6

**CHEONGJU/Cheongju INTL(RKTU)  
RNP RWY 24R**

Note : Approach under U.S. TERPS.



CATEGORY		A	B	C	D	E
LNAV/VNAV DA	ALS	602/40 415(500- $\frac{7}{8}$ )				N/A
	ALS INOP	602/1 $\frac{1}{4}$ 415(500-1 $\frac{1}{4}$ )				N/A
LNAV MDA	ALS	620/40 433(500- $\frac{3}{4}$ )				N/A
	ALS INOP	620/55 433(500-1)		620-1 $\frac{1}{4}$ 433(500-1 $\frac{1}{4}$ )		N/A
CIRCLING		N/A				

Change : Amended chart symbol.

CHEONGJU/Cheongju INTL(RKTU)  
RNP RWY 24R

## AERONAUTICAL DATA TABULATION

## Instrument Approach Procedure Coding Tables

## RNP RWY 24R - via IKAPO to TURTU(IF)

Serial Number	Path Descriptor	Waypoint Identifier	Fly-over	Course/Track °M(°T)	Distance (NM)	Turn direction	Altitude (ft)	Speed (kt)	Coordinates	VPA/TCH	Navigation specification	Remarks
001	-	IKAPO	-	-	-	-	+7 000	-	36°40'16.6"N 127°45'26.2"E	-	RNAV 1	IAF
002	TF	MENOL	-	020 (012.32)	7.3	-	+6 000	-	36°47'25.1"N 127°47'22.5"E	-	RNAV 1	-
003	TF	TURTU	-	330 (322.61)	5.1	-	+3 700	-230	36°51'27.0"N 127°43'32.3"E	-	RNAV 1	IF

## RNP RWY 24R - via HYEIN to TURTU(IF)

Serial Number	Path Descriptor	Waypoint Identifier	Fly-over	Course/Track °M(°T)	Distance (NM)	Turn direction	Altitude (ft)	Speed (kt)	Coordinates	VPA/TCH	Navigation specification	Remarks
001	TF	HYEIN	-	-	-	-	+6 000	-230	36°57'47.1"N 127°37'29.7"E	-	RNAV 1	IAF
002	TF	TURTU	-	150 (142.51)	8.0	-	+3 700	-230	36°51'27.0"N 127°43'32.3"E	-	RNAV 1	IF

## RNP RWY 24R - via TURTU(IF) to MAHF

Serial Number	Path Descriptor	Waypoint Identifier	Fly-over	Course/Track °M(°T)	Distance (NM)	Turn direction	Altitude (ft)	Speed (kt)	Coordinates	VPA/TCH	Navigation specification	Remarks
001	TF	TURTU	-	-	-	-	+3 700	-230	36°51'27.0"N 127°43'32.3"E	-	RNAV 1	IF
002	TF	TU743	-	240 (232.56)	5.5	-	+2 500	-	36°48'05.3"N 127°38'04.9"E	-	RNAV 1	-
003	TF	APAKI	-	240 (232.51)	1.7	-	+2 100	-	36°47'03.7"N 127°36'25.0"E	-	RNP 0.3	FAF
004	TF	TU746	-	240 (232.49)	2.8	-	+1 200	-	36°45'20.2"N 127°33'37.6"E	-	RNP 0.3	LNAV only
005	TF	SURAX	Y	240 (232.46)	2.2	-	+620	-	36°44'00.5"N 127°31'28.6"E	-	RNP 0.3	MAP(LNAV only)
006	TF	KADEV	-	240 (232.44)	3.8	-	-	-	36°41'40.5"N 127°27'42.6"E	-	RNAV 1	CG 340 ft/NM to 6 000 ft
007	TF	COWON	-	260 (252.25)	8.0	-	6 000	-	36°39'13.6"N 127°18'14.5"E	-	RNAV 1	-
008	HM	IKAPO	-	110 (102.15)	5.0	-	+7 000	-	36°40'16.6"N 127°45'26.2"E	-	-	-
009	HM	COWON	-	080 (072.25)	5.0	-	@6 000	-	36°39'13.6"N 127°18'14.5"E	-	-	-

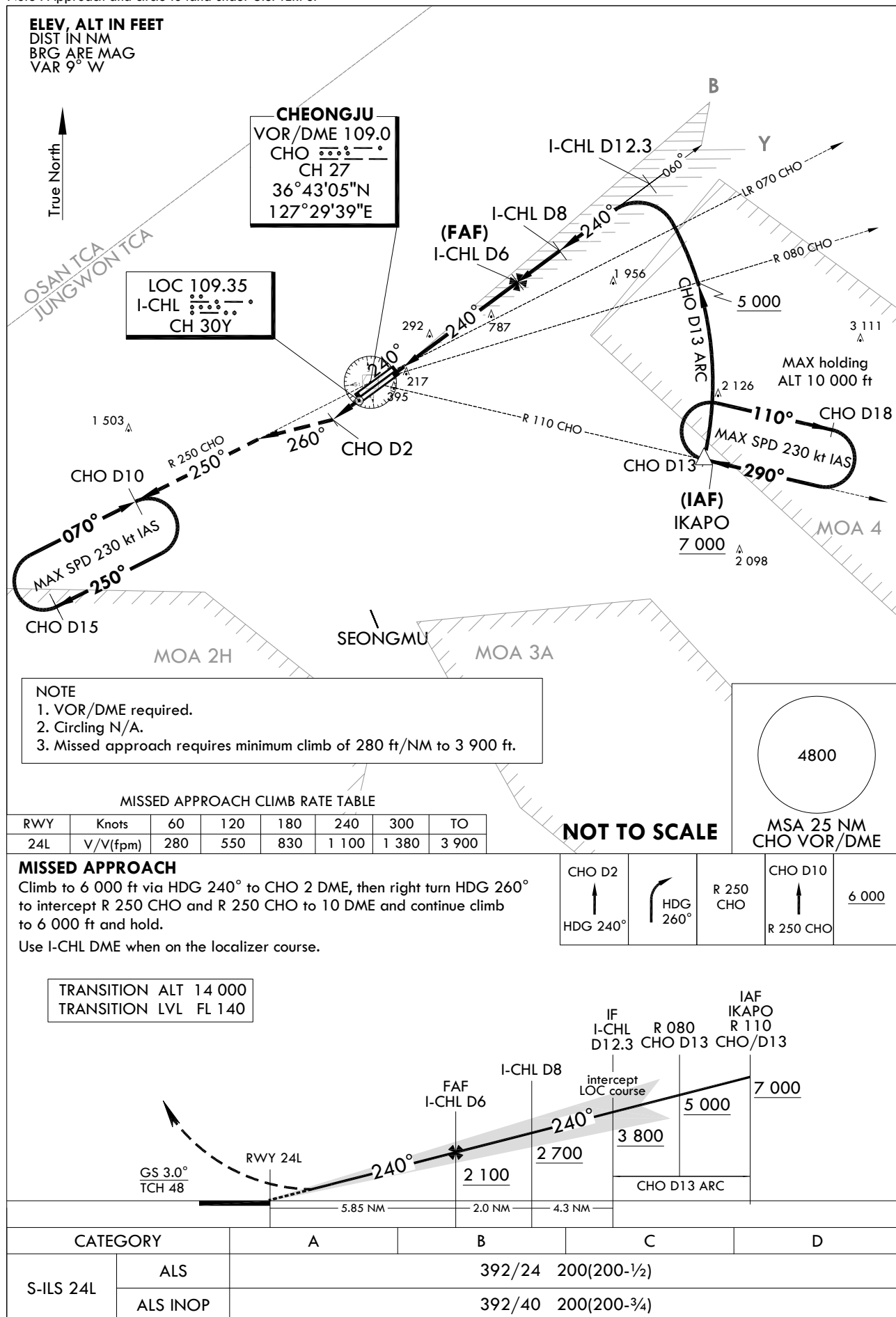
**INSTRUMENT  
APPROACH  
CHART**

**AERODROME ELEV 192 ft**  
HEIGHTS RELATED TO  
THR RWY 24L - ELEV 192 ft

JUNGWON APP 134.0 265.75  
CHEONGJU GCA 134.4 134.1  
CHEONGJU TWR 118.7 126.2 249.6

**CHEONGJU/Cheongju INTL(RKTU)**  
**ILS**  
**RWY 24L**

Note : Approach and circle to land under U.S. TERPS.



Change : Amended chart symbol(LOC, IAF).

**INTENTIONALLY**

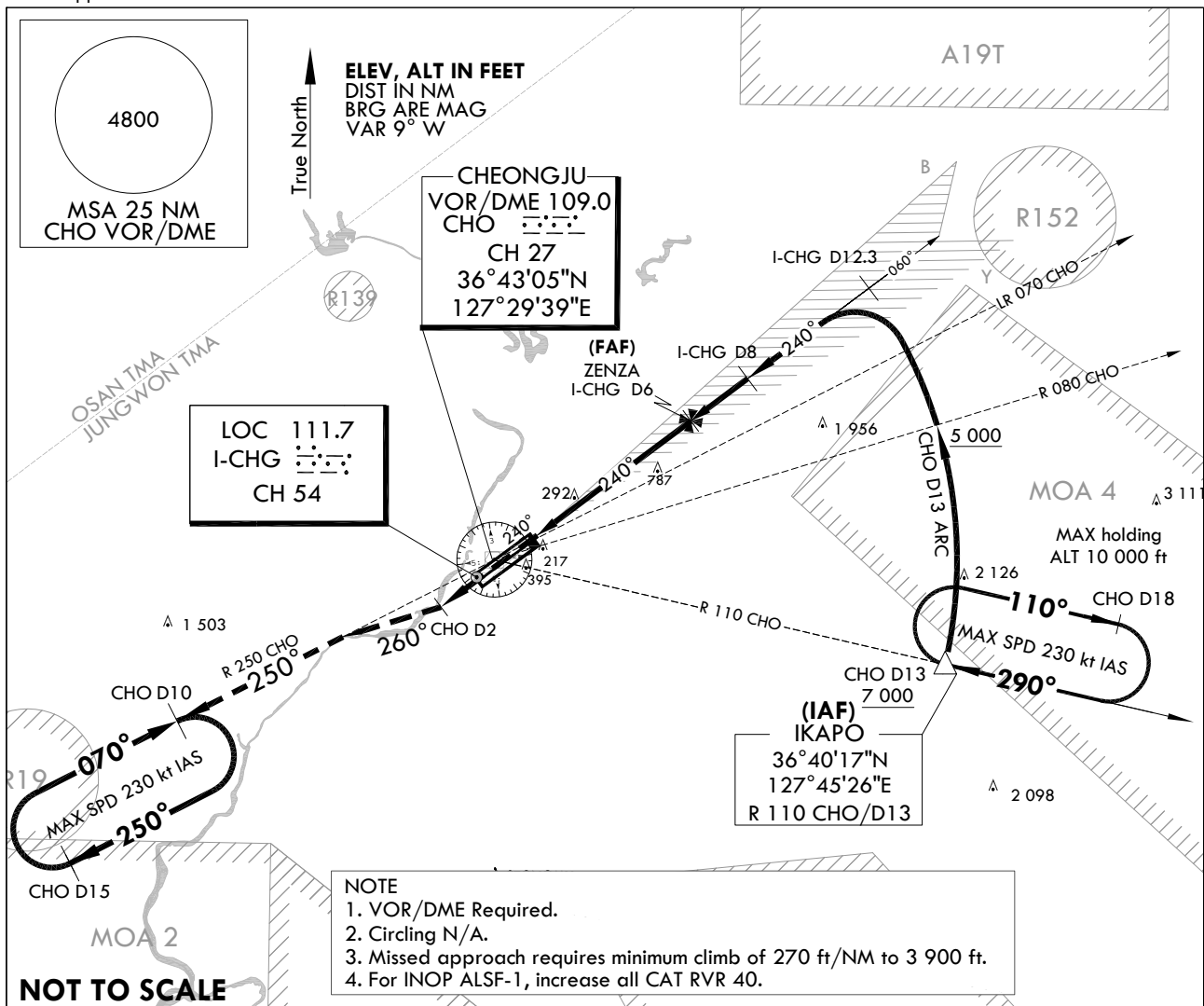
**LEFT**

**BLANK**

JUNGWON APP	134.0	265.75
CHEONGJU GCA	134.4	134.1
CHEONGJU TWR	118.7	126.2 249.6

**CHEONGJU/Cheongju INTL(RKTU)**  
**ILS Y**  
**RWY 24R**

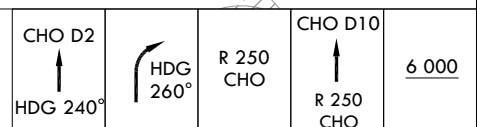
Note : Approach and circle to land under U.S. TERPS.



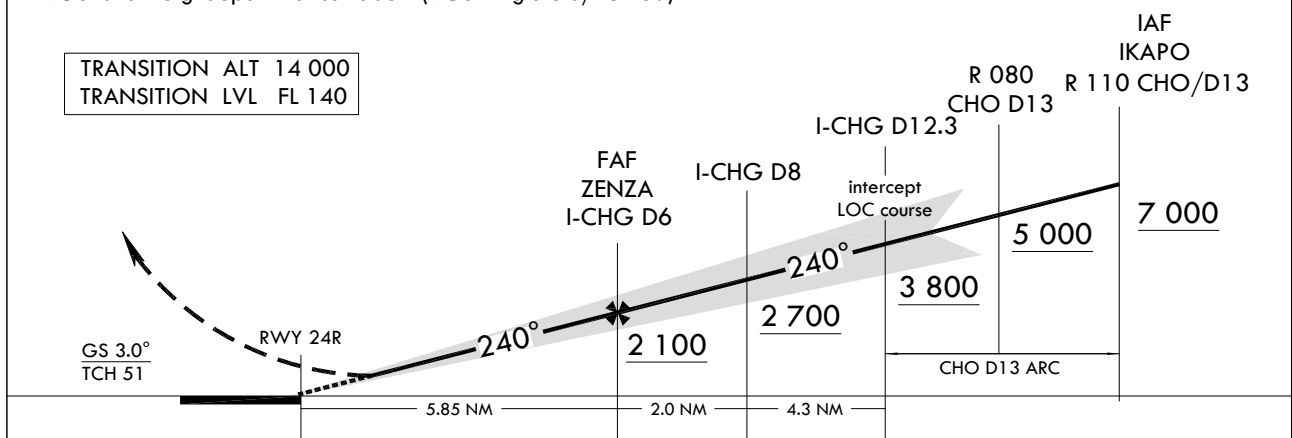
Climb to 6 000 ft via HDG 240° to CHO 2 DME, then right turn HDG 260° to intercept R 250 CHO and R 250 CHO to 10 DME and continue climb to 6 000 ft and hold.

Use I-CHG DME when on the localizer course.

\* VGSI and ILS glidepath not coincident (VGSI Angle 3.0/TCH 59).



TRANSITION	ALT	14 000
TRANSITION	LVL	FL 140



CATEGORY		A	B	C	D	E
S-ILS 24R	ALS	387/24 200(200- $\frac{1}{2}$ )				N/A
	ALS INOP	387/40 200(200- $\frac{3}{4}$ )				N/A

Change : Amended chart symbol(LOC, IAF).		

**INTENTIONALLY**

**LEFT**

**BLANK**

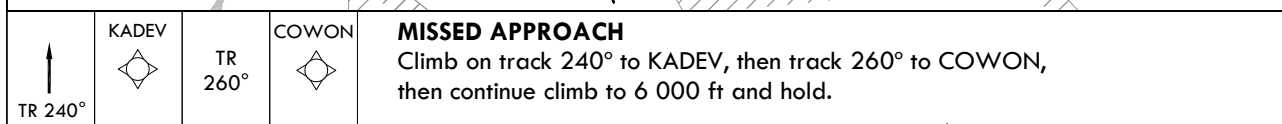
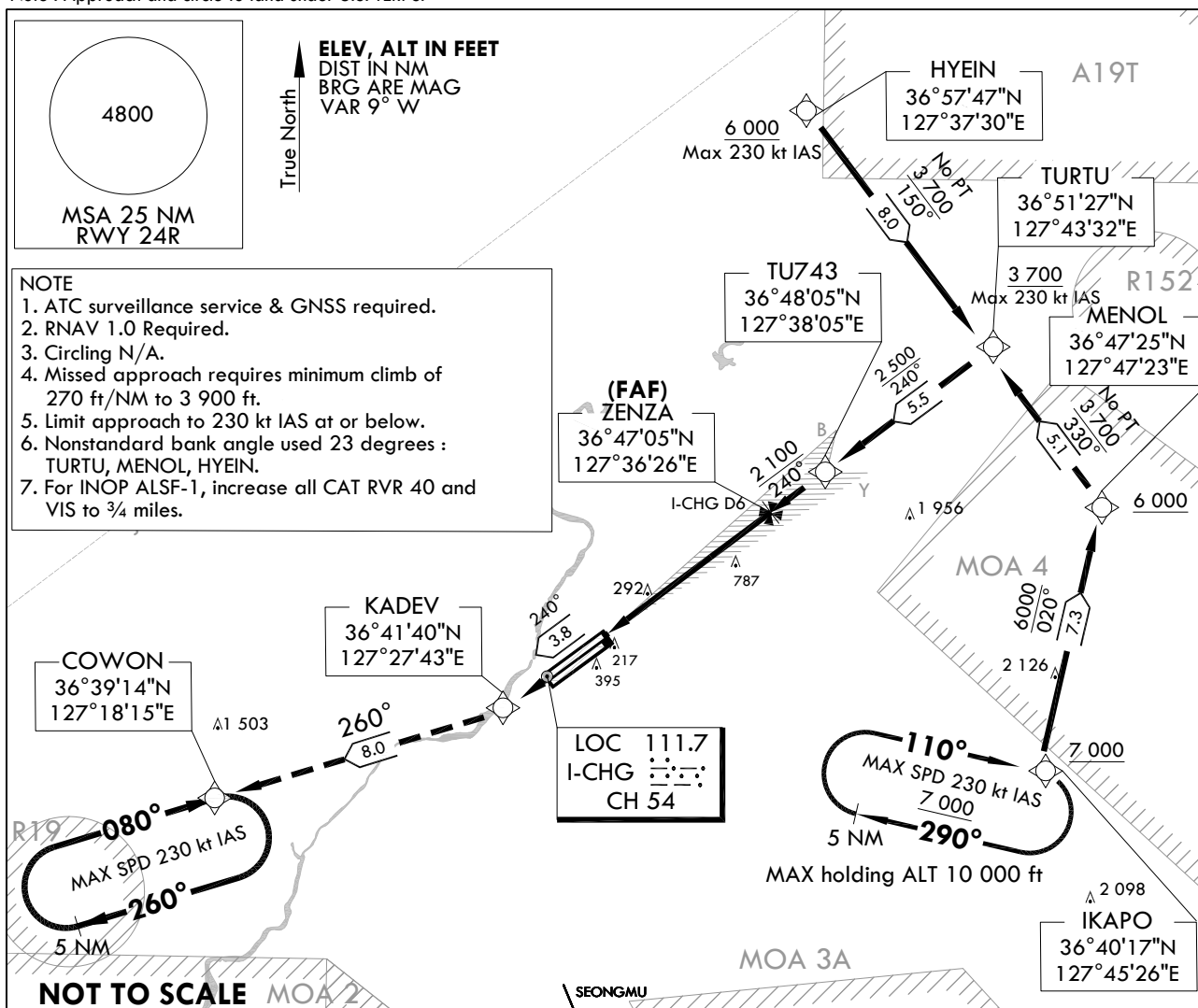
**INSTRUMENT  
APPROACH  
CHART**

**AERODROME ELEV 192 ft**  
HEIGHTS RELATED TO  
THR RWY 24R - ELEV 187 ft

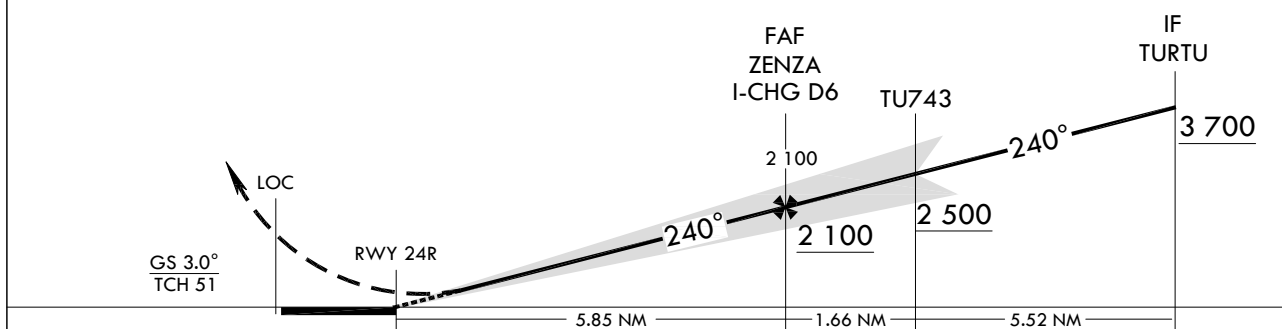
JUNGWON APP 134.0 265.75  
CHEONGJU GCA 134.4 134.1  
CHEONGJU TWR 118.7 126.2 249.6

**CHEONGJU/Cheongju INTL(RKTU)**  
**ILS Z**  
**RWY 24R**

Note : Approach and circle to land under U.S. TERPS.



TRANSITION ALT 14 000  
TRANSITION LVL FL 140



CATEGORY		A	B	C	D	E
S-ILS 24R	ALS		387/24	200(200- $\frac{1}{2}$ )		N/A
	ALS INOP		387/40	200(200- $\frac{3}{4}$ )		N/A

Change : Amended chart symbol(LOC).

**INTENTIONALLY**

**LEFT**

**BLANK**



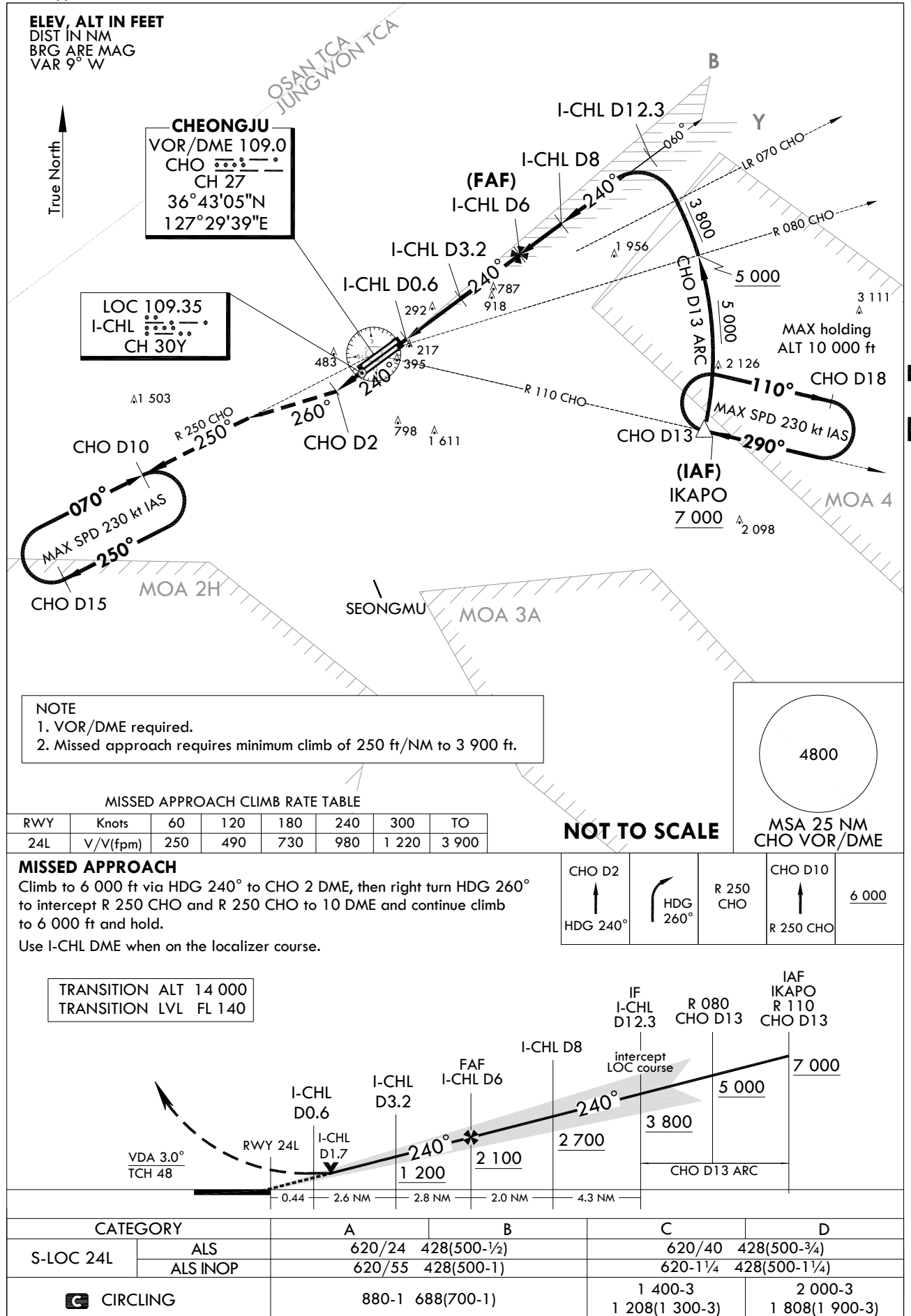
**INSTRUMENT  
APPROACH  
CHART**

**AERODROME ELEV 192 ft**  
HEIGHTS RELATED TO  
THR RWY 24L - ELEV 192 ft

JUNGWON APP 134.0 265.75  
CHEONGJU GCA 134.4 134.1  
CHEONGJU TWR 118.7 126.2 249.6

**CHEONGJU/Cheongju INTL(RKTU)  
LOC  
RWY 24L**

Note : Approach and circle to land under U.S. TERPS.



Change : Amended chart symbol(LOC, IAF).

**INTENTIONALLY**

**LEFT**

**BLANK**

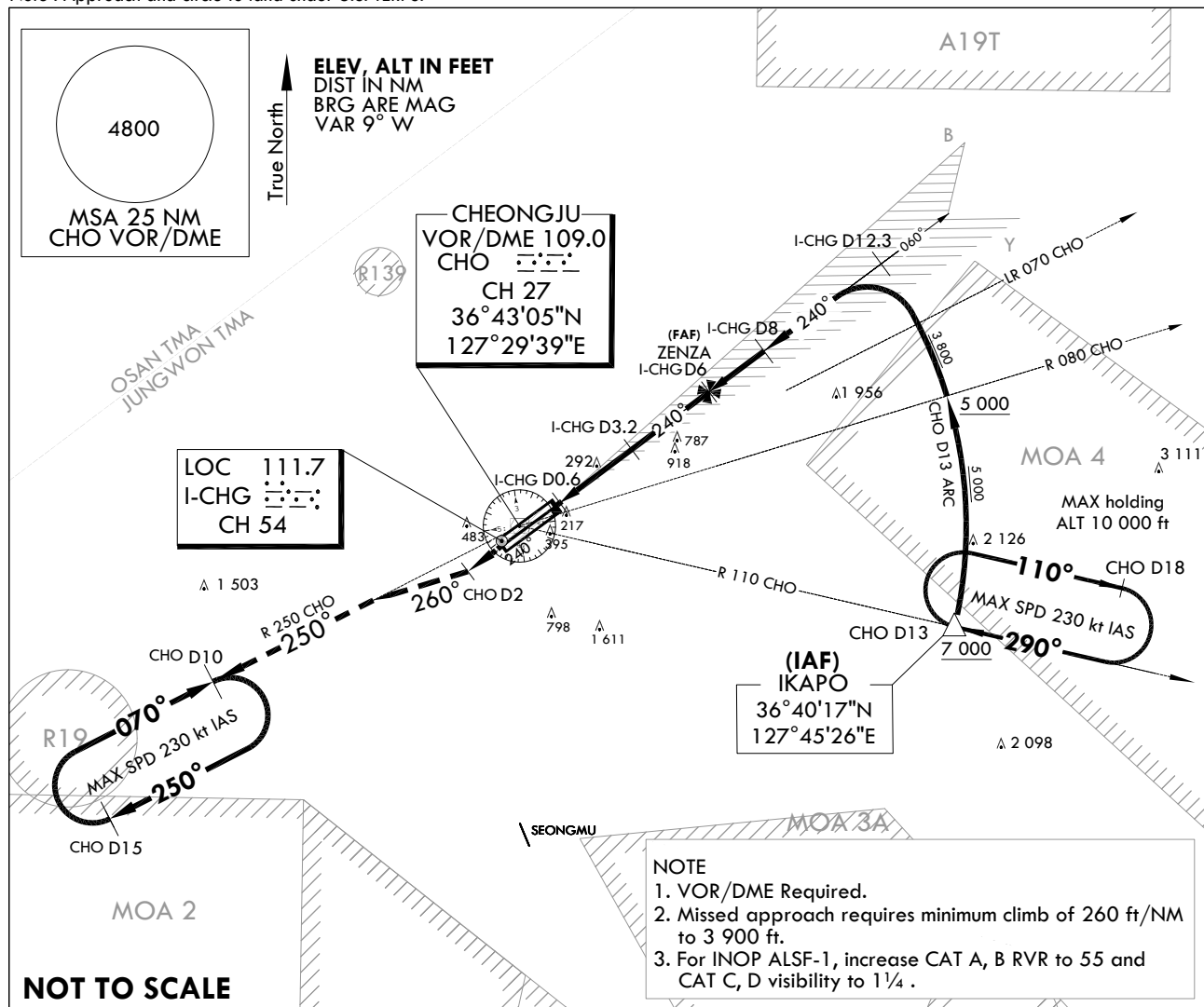
**INSTRUMENT  
APPROACH  
CHART**

**AERODROME ELEV 192 ft**  
HEIGHTS RELATED TO  
THR RWY 24R - ELEV 187 ft

JUNGWON APP 134.0 265.75  
CHEONGJU GCA 134.4 134.1  
CHEONGJU TWR 118.7 126.2 249.6

**CHEONGJU/Cheongju INTL(RKTU)**  
**LOC Y**  
**RWY 24R**

Note : Approach and circle to land under U.S. TERPS.



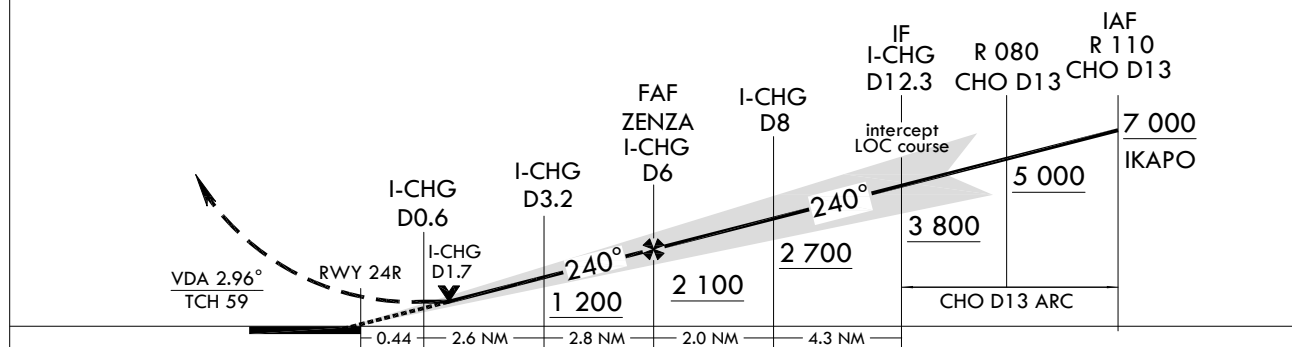
CHO D2 ↑ HDG 240°	HDG 260°	R 250 CHO	CHO D10 ↑ R 250 CHO	6 000
-------------------------	----------	--------------	---------------------------	-------

**MISSED APPROACH**

Climb to 6 000 ft via HDG 240° to CHO 2 DME, then right turn HDG 260° to intercept R 250 CHO and R 250 CHO to 10 DME and continue climb to 6 000 ft and hold.

TRANSITION ALT 14 000  
TRANSITION LVL FL 140

Use I-CHG DME when on the localizer course.



CATEGORY		A	B	C	D	E
S-LOC 24R	ALS	620/24	433(500- $\frac{1}{2}$ )	620/40	433(500- $\frac{3}{4}$ )	N/A
	ALS INOP	620/55	433(500-1)	620-1 $\frac{1}{4}$	433(500-1 $\frac{1}{4}$ )	N/A
CIRCLING		880-1	688(700-1)	1 200-3 1 008(1 100-3)	2 000-3 1 808(1 900-3)	N/A

Change : Amended chart symbol(LOC).

**INTENTIONALLY**

**LEFT**

**BLANK**

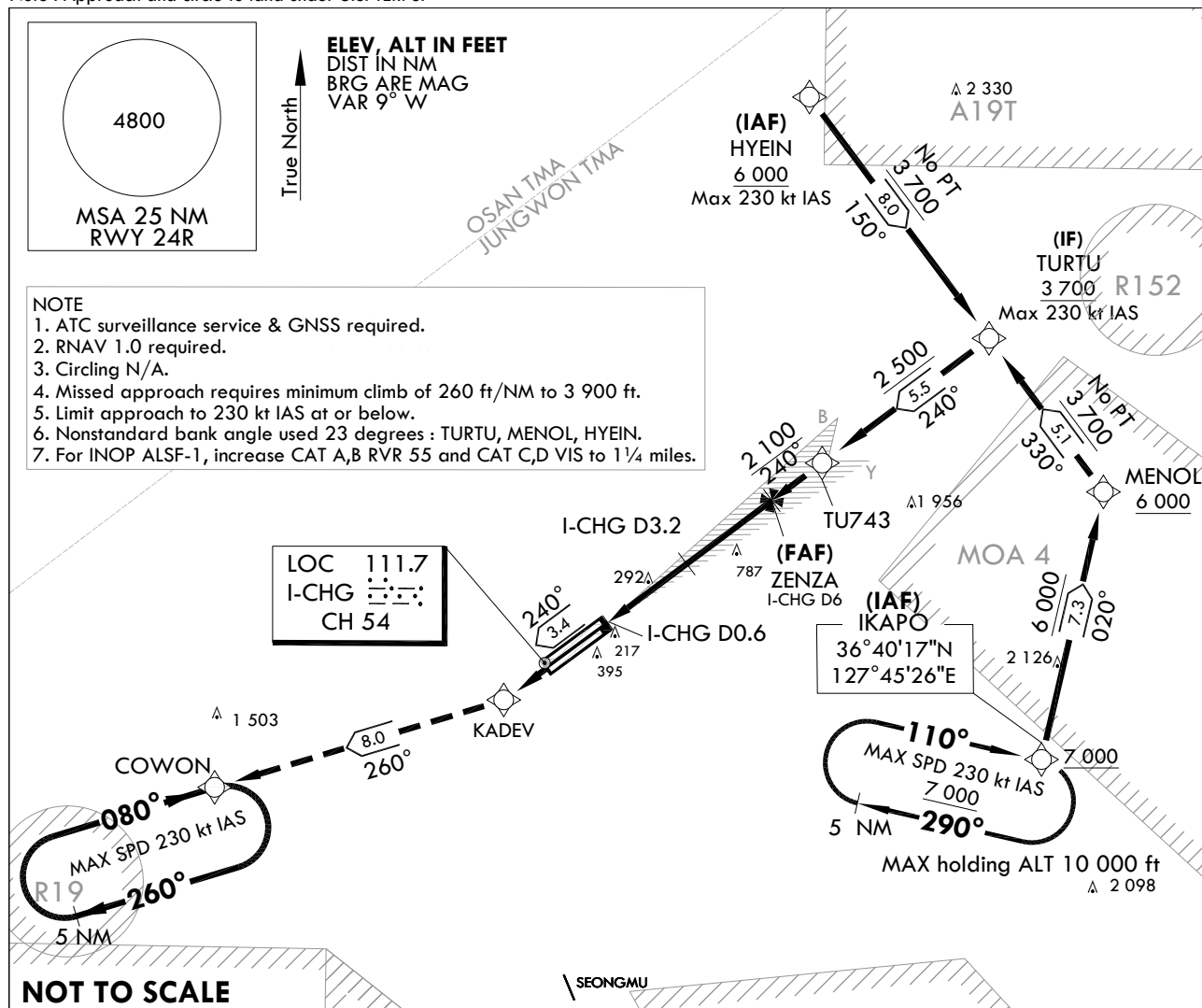
**INSTRUMENT  
APPROACH  
CHART**

**AERODROME ELEV 192 ft**  
HEIGHTS RELATED TO  
THR RWY 24R - ELEV 187 ft

JUNGWON APP 134.0 265.75  
CHEONGJU GCA 134.4 134.1  
CHEONGJU TWR 118.7 126.2 249.6

**CHEONGJU/Cheongju INTL(RKTU)**  
**LOC Z**  
**RWY 24R**

Note : Approach and circle to land under U.S. TERPS.

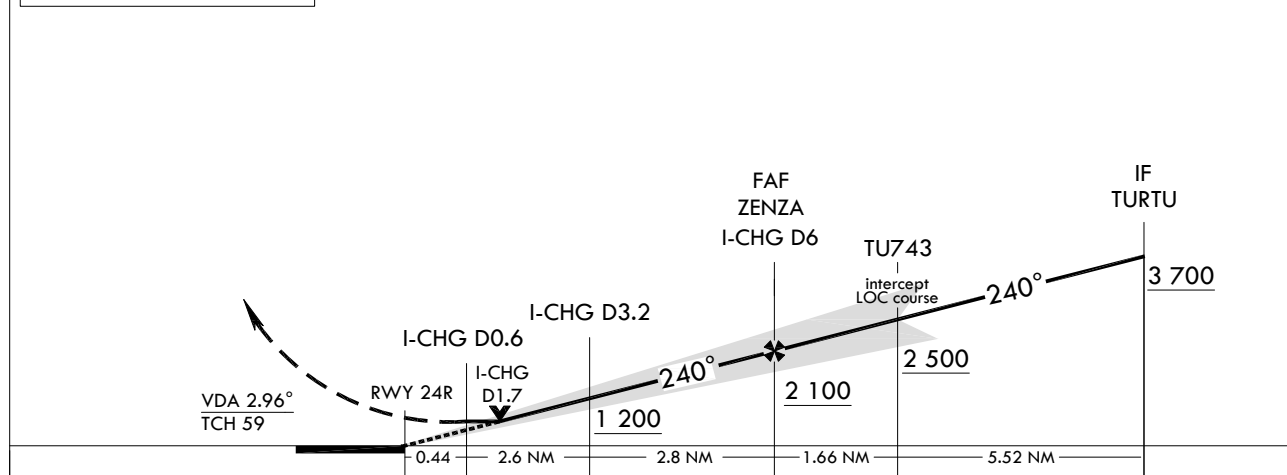


	KADEV	COWON
↑	✧	✧
TR 240°	TR 260°	

**MISSED APPROACH**  
Climb to 6 000 ft via on track 240° to KADEV, then track 260° to COWON, then continue climb to 6 000 ft and hold.

Use I-CHG DME when on the localizer course.

TRANSITION ALT	14 000
TRANSITION LVL	FL 140



CATEGORY	A	B	C	D	E
S-LOC 24R	ALS	620/24 433(500-1/2)	620/40 433(500-3/4)		N/A
	ALS INOP	620/55 433(500-1)	620-1 1/4 433(500-1 1/4)		N/A

Change : Amended chart symbol(LOC, IAF).

**INTENTIONALLY**

**LEFT**

**BLANK**

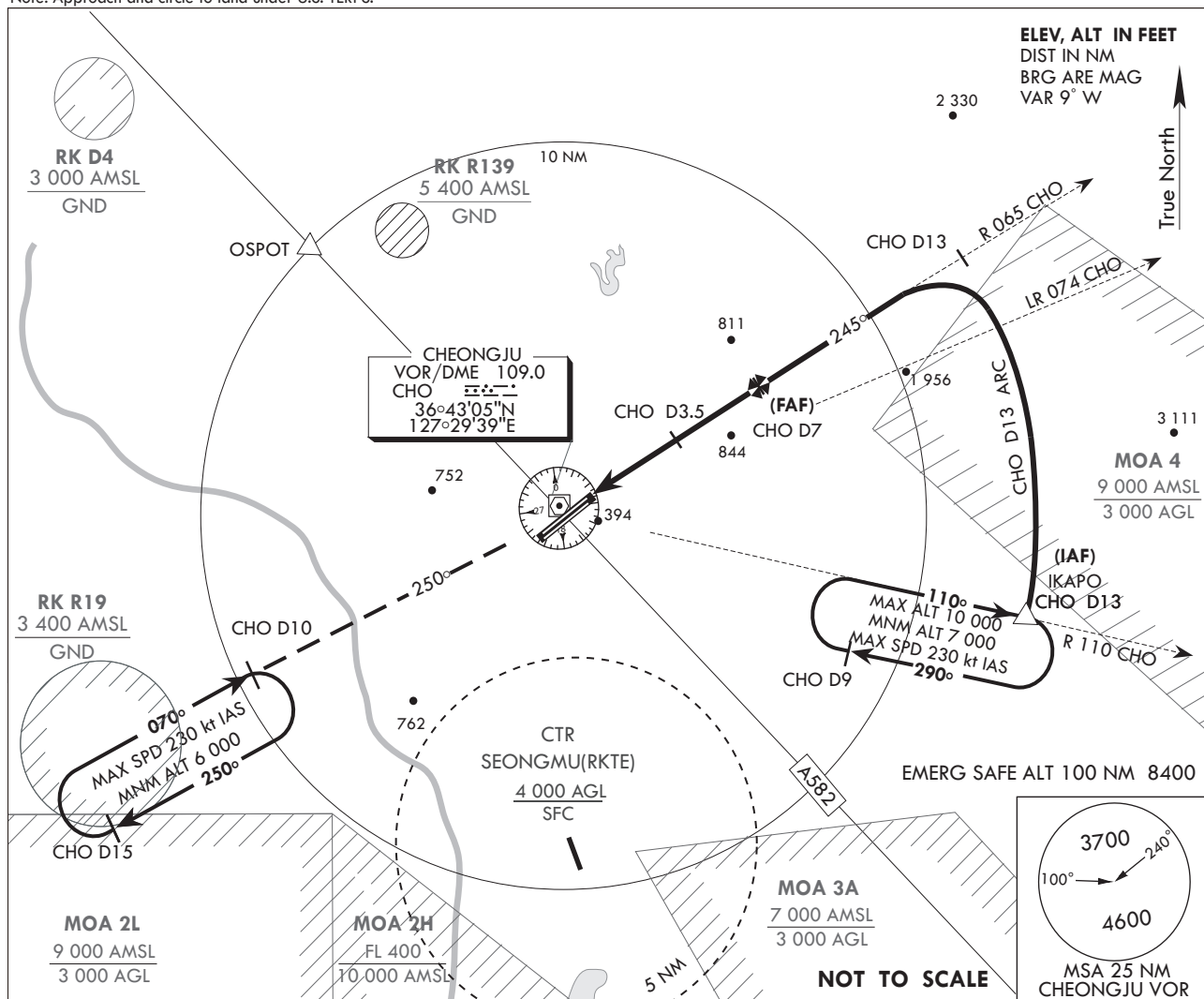
**INSTRUMENT  
APPROACH  
CHART**

**AERODROME ELEV 192 ft**  
HEIGHTS RELATED TO  
THR RWY 24R-ELEV 186 ft

JUNGWON APP 134.0 265.75  
CHEONGJU GCA 134.4 134.1  
CHEONGJU TWR 118.7 126.2 249.6

**CHEONGJU/Cheongju INTL  
VOR  
RWY 24R**

Note: Approach and circle to land under U.S. TERPS.

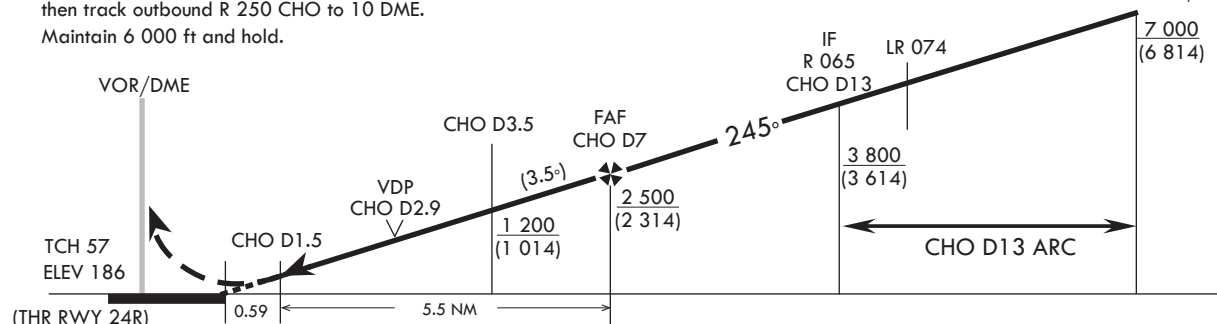


**MISSED APPROACH**

Climb on R 065 CHO to over CHO VOR,  
then track outbound R 250 CHO to 10 DME.  
Maintain 6 000 ft and hold.

TRANSITION ALT 14 000  
TRANSITION LVL FL 140

IAF  
IKAPO  
R 110 CHO/D13



CATEGORY	A	B	C	D
S-VOR 24R	860/24 674 (700- $\frac{1}{2}$ )		860-1 $\frac{1}{2}$ 674 (700-1 $\frac{1}{2}$ )	860-1 $\frac{3}{4}$ 674 (700-1 $\frac{3}{4}$ )
CIRCLING	860-1 668 (700-1)		860-2 668 (700-2)	1 200-3 1 008 (1 100-3)

Missed Approach Obstacle Climb Rate Table

	KNOTS	60	120	180	240	300	TO
Rate of descent V/V (fpm)		320	630	940	1 250	1 560	6 000

Change : Amended chart symbol.

INTENTIONALLY

LEFT

BLANK